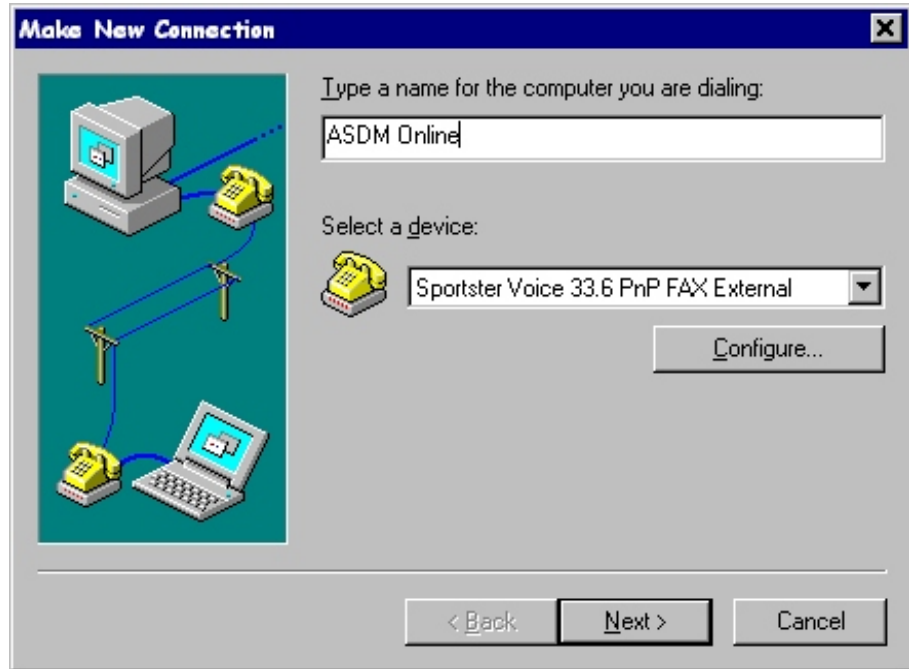


# ASDM Online

*Windows ME Setup Instructions*

## To make a connection to ASDM Online:

1. Double-click **My Computer**.
2. Double-click **Control Panel**.
3. Double-click **Dial-Up Networking**.
4. Double-click **Make New Connection**.
5. Enter **ASDM Online** for the name of the new connection.
6. Select the **Next** button.



7. Enter the access phone number from the Setup Information sheet for your area. The example to the right shows the area code. (It doesn't matter if you use the hyphen).
8. Click the **Next** button and then click the **Finish** button. You should now see a **ASDM Online** icon.



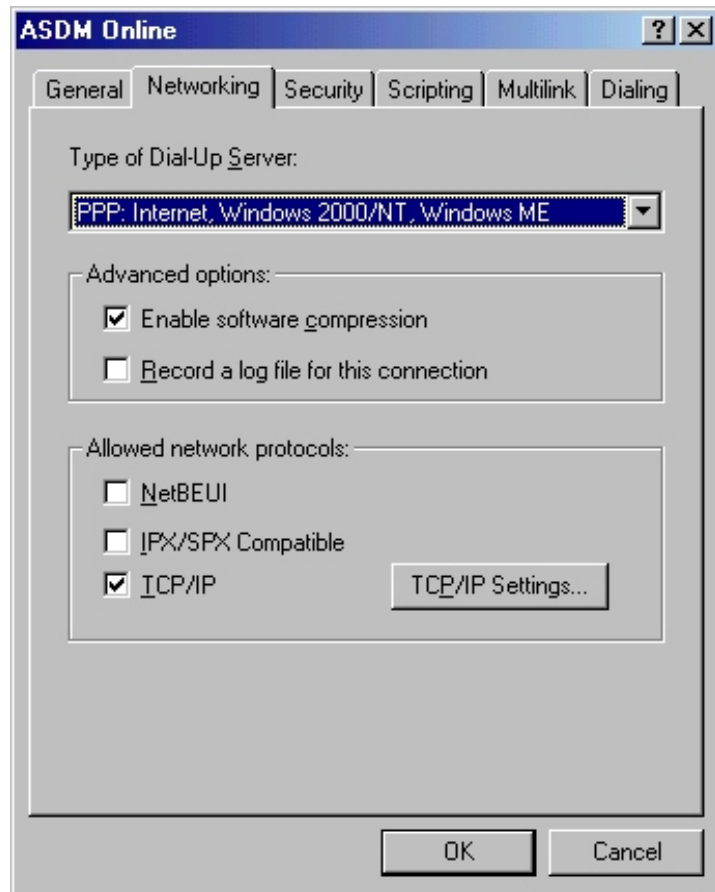


9. Right-click the **ASDM Online** icon and then select **Properties**.

10. Click on the tab labeled **Networking**.

11. Make sure your **Networking** dialog box looks like the picture to the right. The **ONLY** boxes that should be checked are:

Enable software  
compression  
TCP/IP



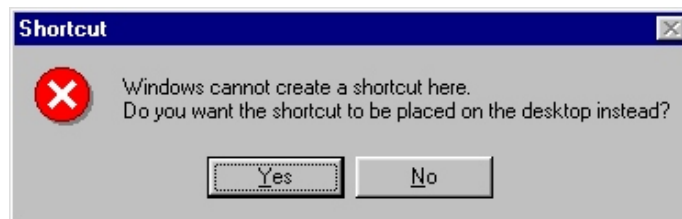
12. Click on the tab labeled **Security**.

13. Enter your username and password in the correct boxes. Make sure the bottom three check boxes are unchecked.

14. Click the next **OK** button.



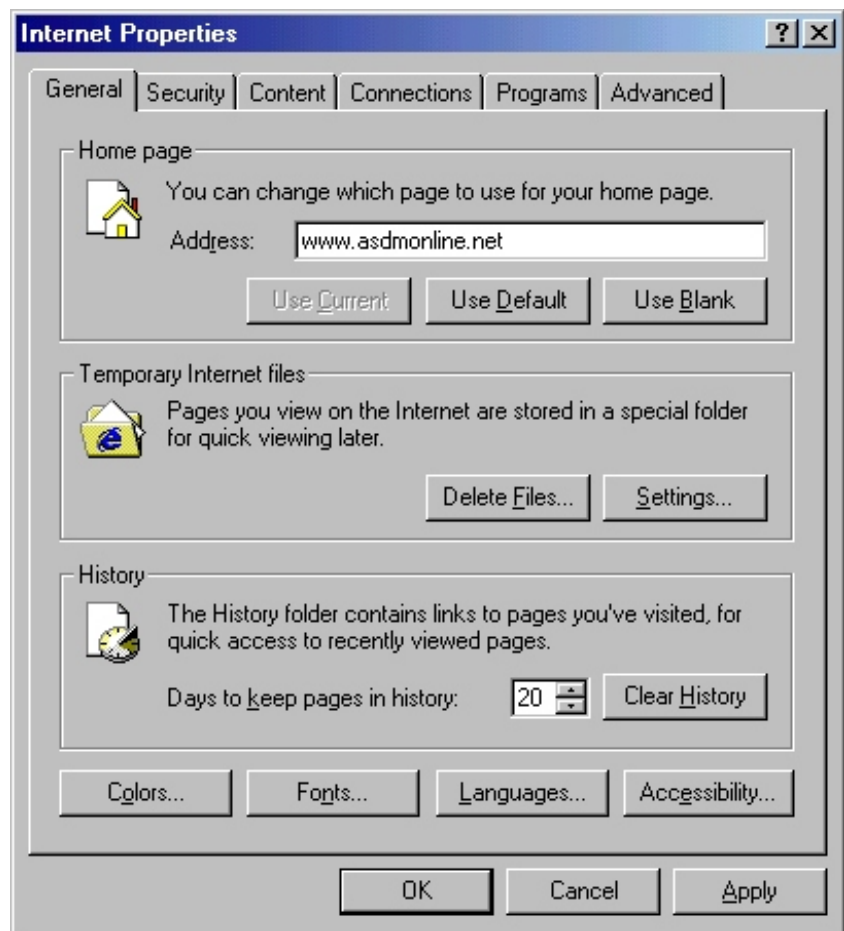
15. Right-click on the **ASDM Online** icon and select create shortcut.



16. The computer will respond with what looks like an error (shown below). Click Yes, you would like the shortcut placed on the desktop. Close Dial-Up Networking.

17. Open Control Panel (Click the **Start Button** then select **Settings, Control Panel** or double click on **My Computer** & double click on **Control Panel**) and double click on **Internet** or **Internet Options** icon.

18. In the homepage box, set the address to: [www.asdmonline.net](http://www.asdmonline.net) as shown at the right.

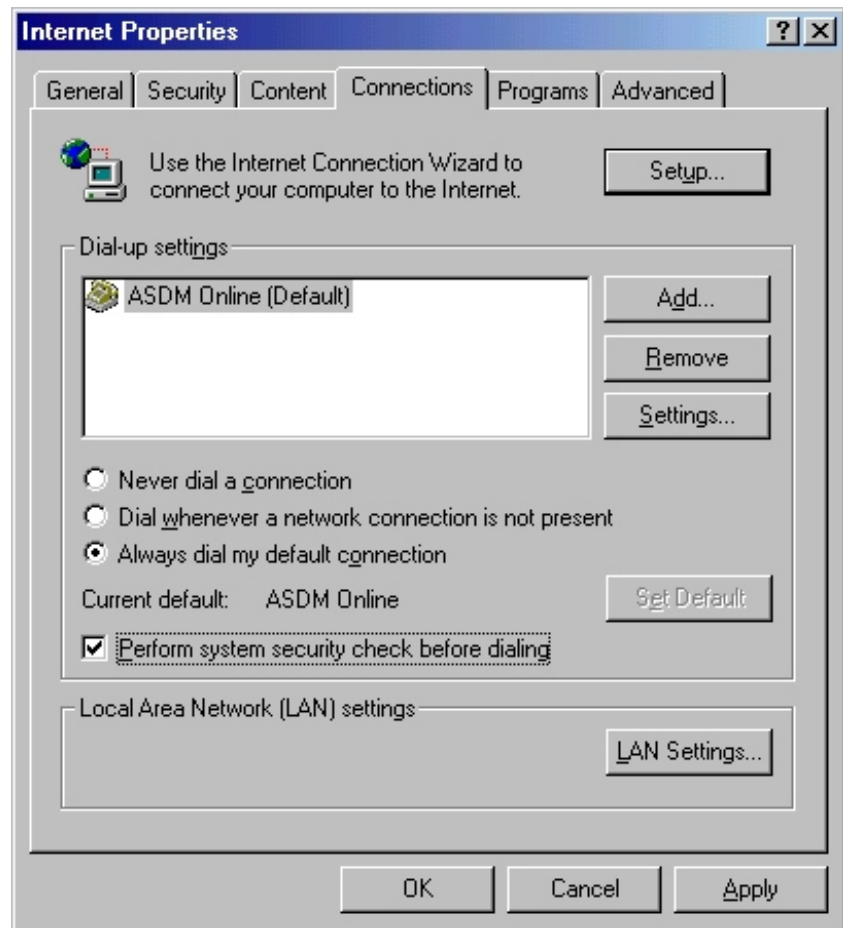


19. Click the **Apply** button.

20. Click on the **Connections** tab.

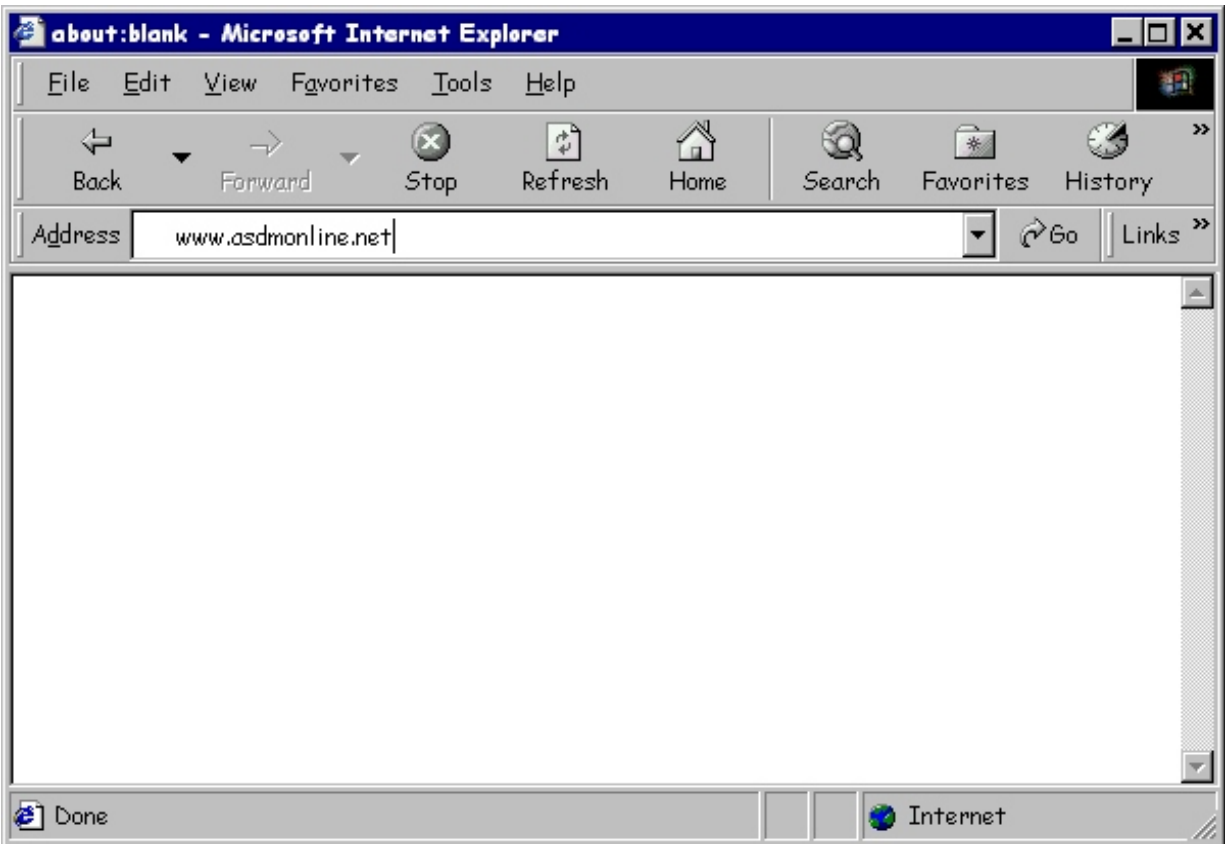
21. Set the computer to “Always dial my default connection”.

22. Make sure that the **ASDM Online** connection is the default connection. To make it the default connection, click on **ASDM Online** in the Dial-up setting box and then click on the “Set Default” button.



23. Close **OK** to close the **Control Panel** (*Do not hit the x in the top right hand corner*).

24. Double-click on your Internet browser (**Internet Explorer** or **Netscape**) or **Shortcut to ASDM Online** icon on your desktop to establish the dial-in connection to us. If you use the **Shortcut to ASDM Online** icon, you will also need to open your browser after you are connected. **The Internet** icon is actually an older version of **Internet Explorer**. Both of these browsers (Internet Explorer or Netscape) are easy to use and are similar in operation. Your screen should look something like:



In the “address area” type **www.asdmonline.net** and press the enter key on the keyboard. This will get you to the “home-base” web site for our dial-in clients. At that site you will find some useful information that will make your Internet experience a little bit easier. If you have problems connecting, call 639-9990 for support.

## Compliments of ASDM Online

Note: Be sure to get the Outlook Express setup instructions from the website. Check the website frequently for tips, tricks and the latest information.