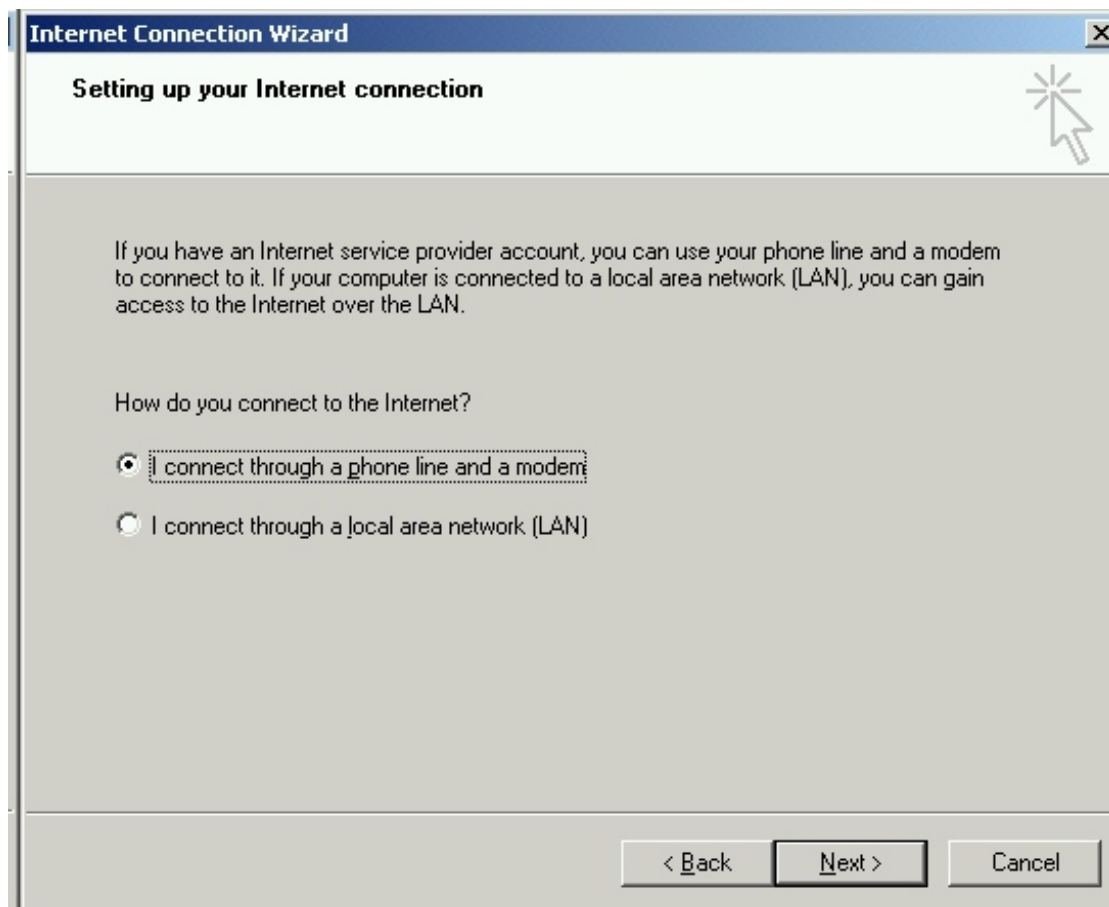


ASDM Online

Windows 2000 Setup Instructions

To make a connection to ASDM Online:

1. Double-click **My Computer**, double-click **Control Panel**, Double-click **Network and Dial-up Connections**.
2. Double-click **Make New Connection** and click **Next**.
3. Select **Dial-up to the Internet** and click **Next**.
4. Select the Option - **I want to setup my Internet connection manually, or I want to connect through a local area network (LAN)** and click **Next**.
5. Choose **I connect through a phone line and a modem**.



6. Click **Next**.

7. Enter the access number for you area from the Setup Information sheet. I used Saltsburg as an example below. Enter **724** for the Area Code and **639-0259** for the phone number. (It doesn't matter if you use the hyphen).

The screenshot shows a window titled "Internet Connection Wizard" with a close button (X) in the top right corner. The main title bar is blue. Below the title bar, the text "Step 1 of 3: Internet account connection information" is displayed in a light green header area, with a mouse cursor pointing at a star icon on the right. The main content area is light gray and contains the following elements:

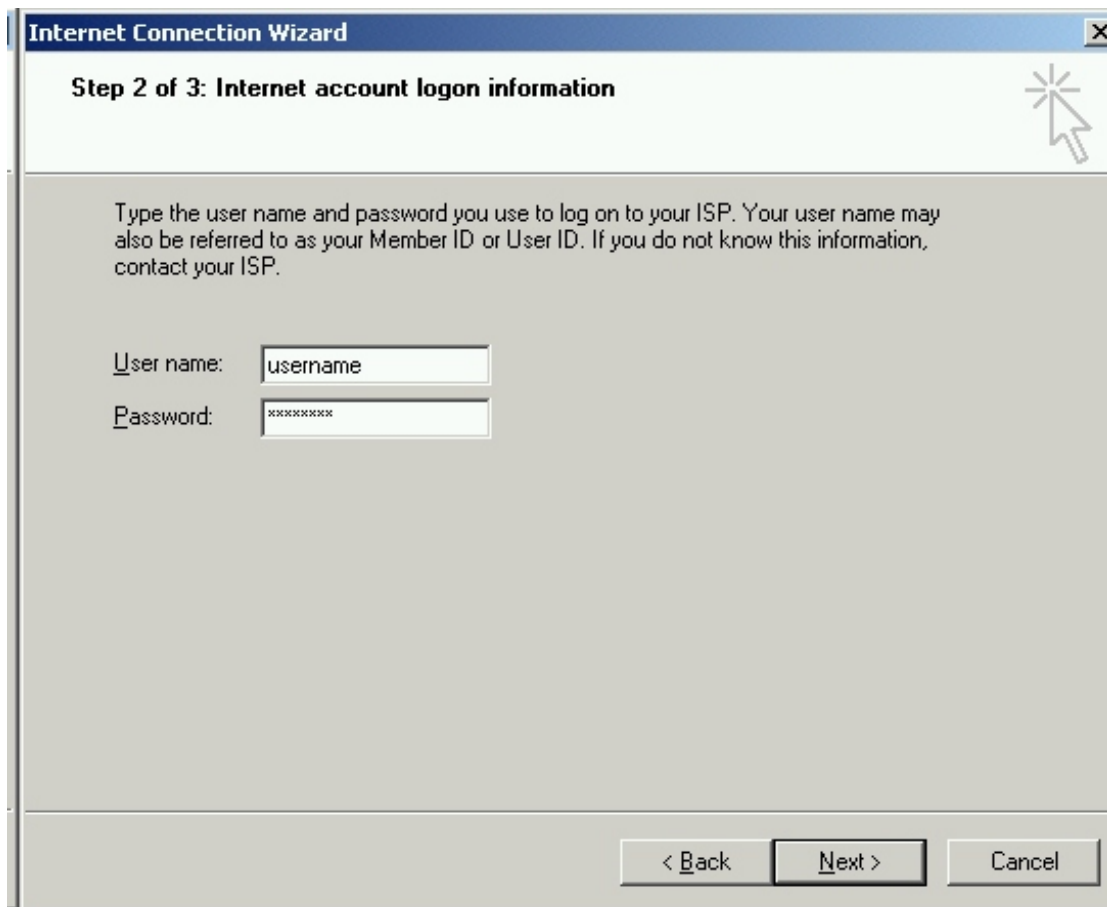
- Instruction: "Type the phone number you dial to connect to your ISP."
- Labels: "Area code:" and "Telephone number:"
- Input fields: A text box containing "724" under "Area code:" and a text box containing "639-0259" under "Telephone number:", separated by a hyphen.
- Label: "Country/region name and code:"
- Dropdown menu: A dropdown menu showing "United States of America (1)".
- Checkbox: A checked checkbox labeled "Use area code and dialing rules".
- Text: "To configure connection properties, click Advanced. (Most ISPs do not require advanced settings.)"
- Button: An "Advanced..." button.

At the bottom of the window, there are three buttons: "< Back", "Next >", and "Cancel".

8. Select the **Next** button.

=

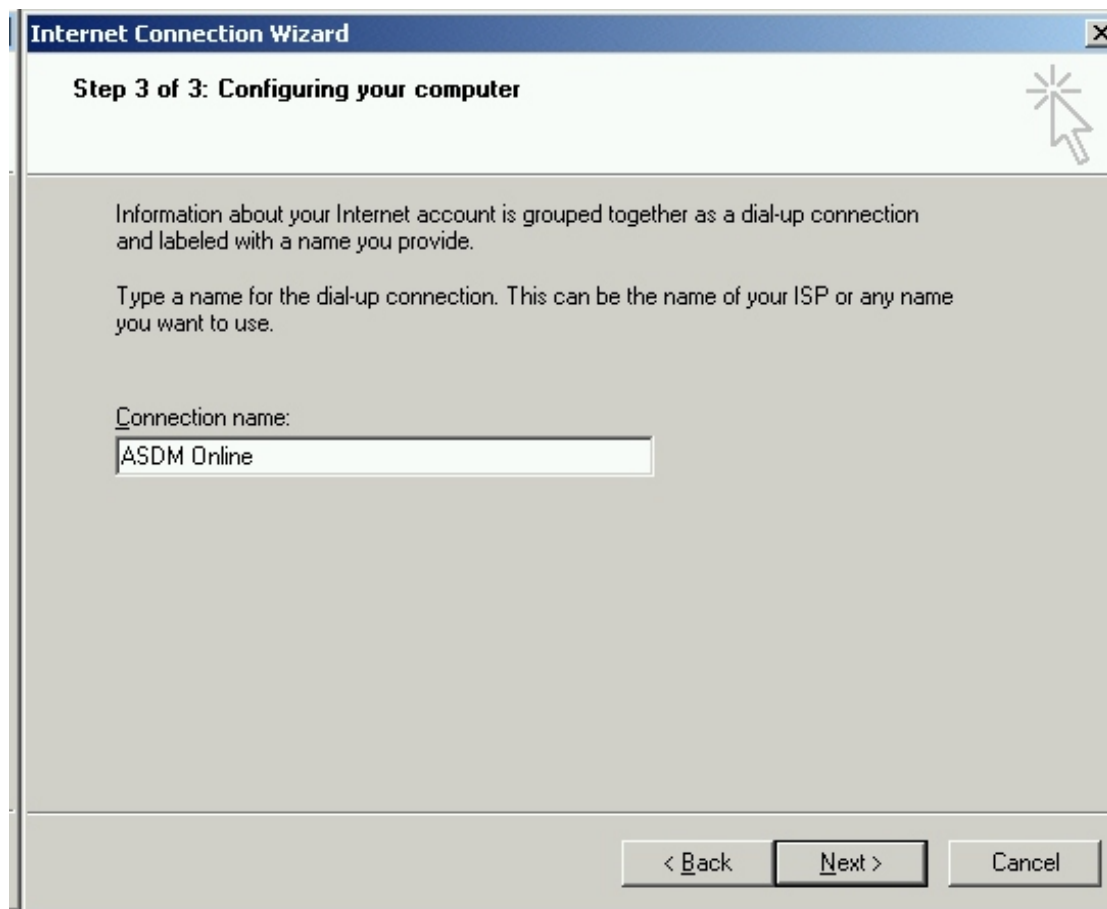
9. Enter *your* Username and Password in the boxes.



The screenshot shows a Windows-style dialog box titled "Internet Connection Wizard". The title bar includes a close button (X) in the top right corner. Below the title bar, the text "Step 2 of 3: Internet account logon information" is displayed in a bold font. To the right of this text is a mouse cursor icon pointing at a star-shaped icon. The main area of the dialog contains the following text: "Type the user name and password you use to log on to your ISP. Your user name may also be referred to as your Member ID or User ID. If you do not know this information, contact your ISP." Below this text are two input fields. The first is labeled "User name:" and contains the text "username". The second is labeled "Password:" and contains seven asterisks "*****". At the bottom of the dialog, there are three buttons: "< Back", "Next >", and "Cancel".

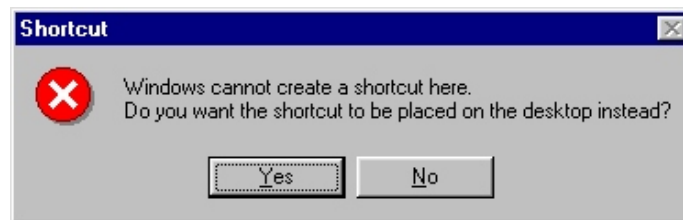
10. Select the **Next** Button.

11. Enter **ASDM Online** for the name of the new connection.



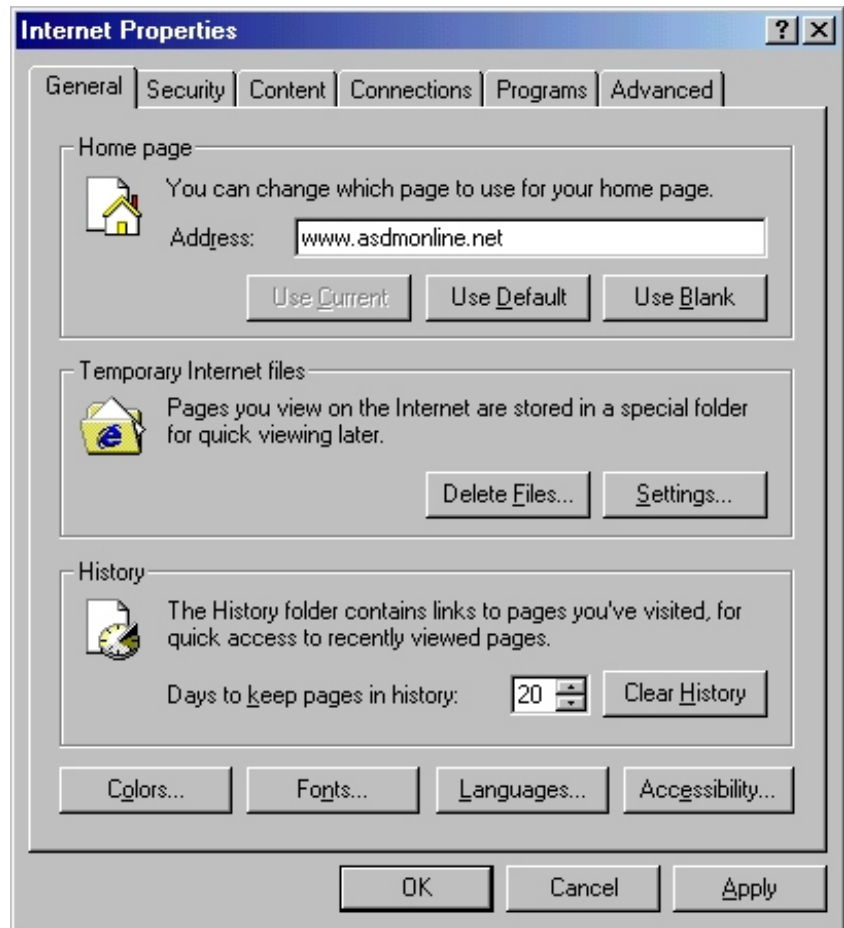
12. Click the **Next** button and then click the **Finish** button. You should now see a **ASDM Online** icon.

13. Right-click on the **ASDM Online** icon and select create shortcut.
14. The computer will respond with what looks like an error (shown below). Click Yes, you would like the shortcut placed on the desktop. Close Dial-Up Networking.



15. Open Control Panel (Click the **Start Button** then select **Settings, Control Panel** or double click on **My Computer** & double click on **Control Panel**) and double click on **Internet** or **Internet Options** icon.

16. In the homepage box, set the address to: www.asdmonline.net as shown at the right.

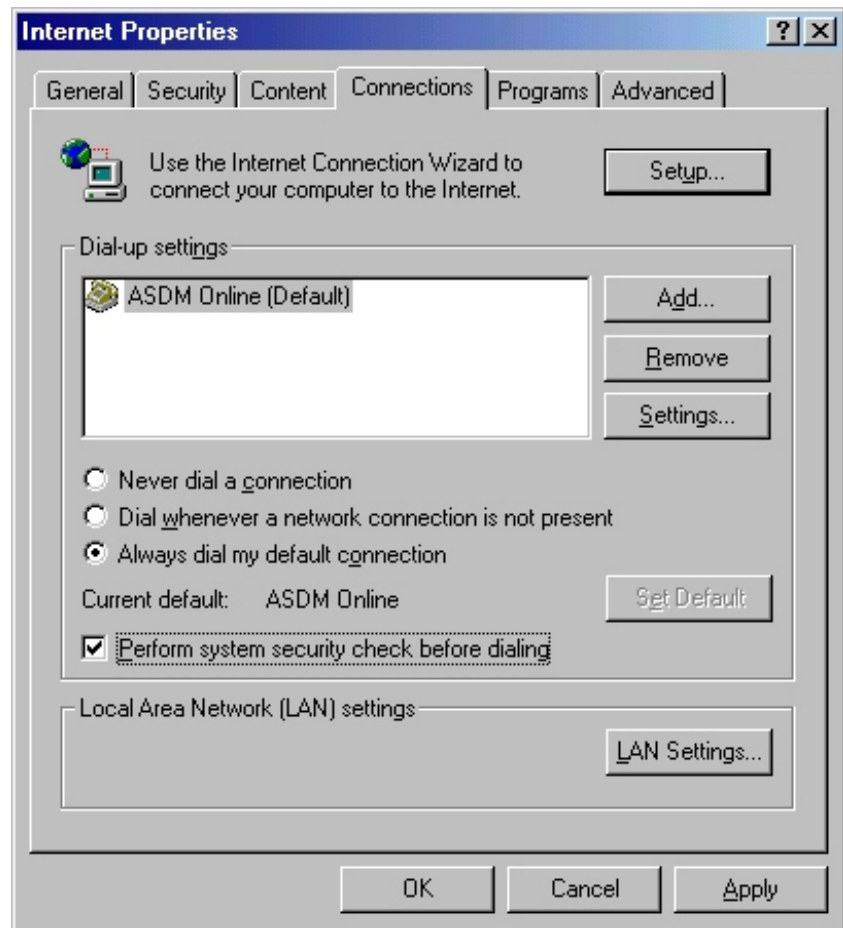


17. Click the **Apply** button.

18. Click on the **Connections** tab.

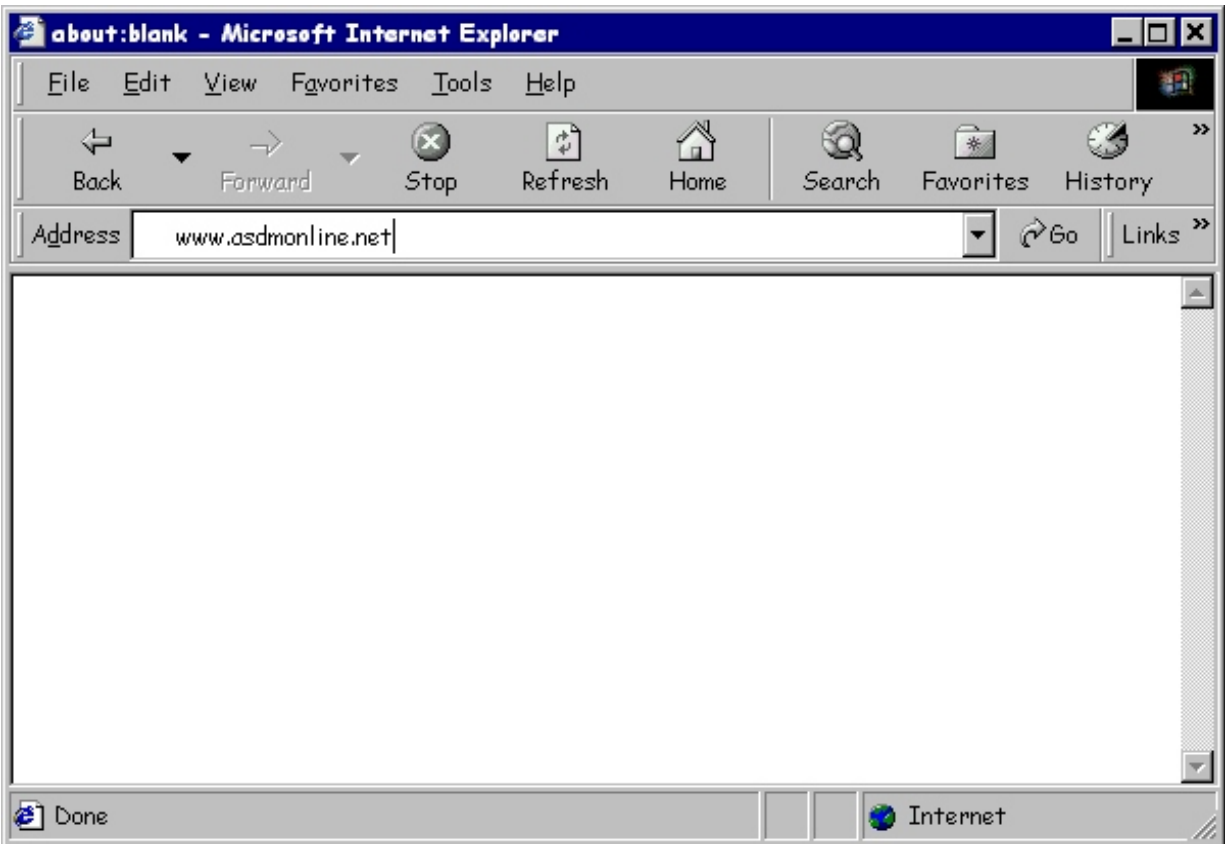
19. Set the computer to “Always dial my default connection”.

20. Make sure that the **ASDM Online** connection is the default connection. To make it the default connection, click on **ASDM Online** in the Dial-up setting box and then click on the “Set Default” button.



21. Close **OK** to close the **Control Panel** (*Do not hit the x in the top right hand corner*).

22. Double-click on your Internet browser (**Internet Explorer** or **Netscape**) or **Shortcut to ASDM Online** icon on your desktop to establish the dial-in connection to us. If you use the **Shortcut to ASDM Online** icon, you will also need to open your browser after you are connected. **The Internet** icon is actually an older version of **Internet Explorer**. Both of these browsers (Internet Explorer or Netscape) are easy to use and are similar in operation. Your screen should look something like:



In the “address area” type **www.asdmonline.net** and press the enter key on the keyboard. This will get you to the “home-base” web site for our dial-in clients. At that site you will find some useful information that will make your Internet experience a little bit easier. If you have problems connecting, call 639-9990 for support.

Compliments of ASDM Online

Note: Be sure to get the Outlook Express setup instructions from the website. Check the website frequently for tips, tricks and the latest information.